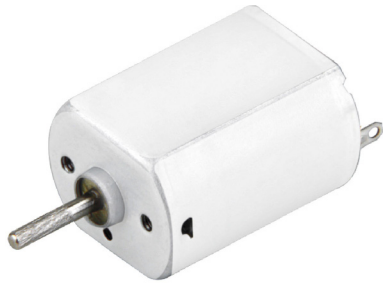


PTFF-130SM

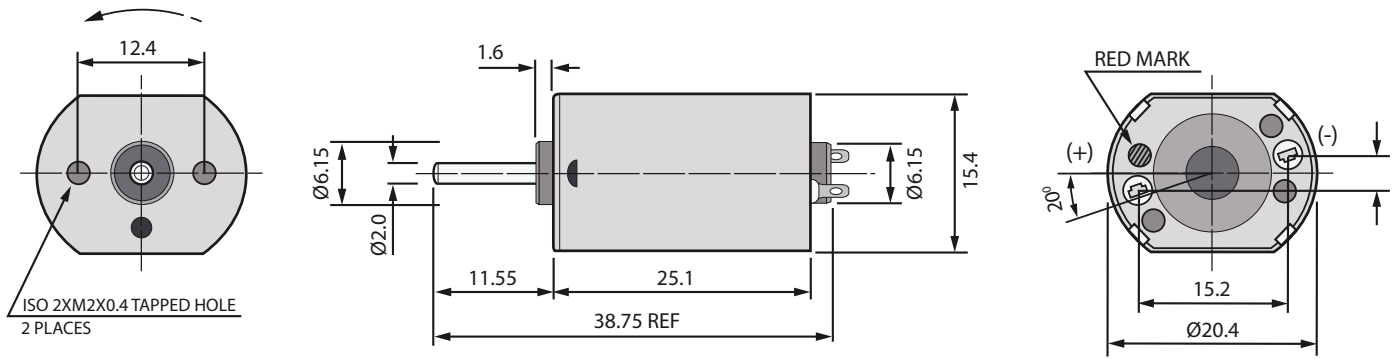
PRECIOUS METAL BRUSHED DC MICRO MOTOR



25Lx20Wx15mmH (0.98Lx0.79Wx0.59inH)

VOLTAGE	1.0~12.0V
HOUSING LENGTH	25.1mm (0.99in)
WIDTH X HEIGHT	20.4 x 15.4mm (0.80 x 0.61in)
SHAFT LENGTH	38mm (1.5in)
SPEED (NO LOAD)	2900~5900 RPM
POWER (AT MAX EFF)	0.18~0.73W
TORQUE (AT MAX EFF)	6.0~12.0 g·cm (0.59~1.18 mN·m)
OPERATING TEMPERATURE	-40°C ~+80°C
WEIGHT	24g (0.85)

MODEL NUMBER	VOLTAGE (V)		NO LOAD		AT MAXIMUM EFFICIENCY					STARTING		
	OPERATING RANGE	NOMINAL	SPEED RPM	CURRENT A	SPEED RPM	CURRENT A	TORQUE g·cm	TORQUE mN·m	OUTPUT W	TORQUE g·cm	TORQUE mN·m	CURRENT A
PTFF-130SM-2860	1.0~1.5	1.2	7400	0.210	5800	0.81	7.5	0.74	0.45	38.0	3.72	3.10
PTFF-130SM-11340	3.0~12.0	6.0	4800	0.030	3800	0.12	8.5	0.83	0.33	44.0	4.31	0.46
		9.0	7300	0.035	5900	0.15	12.0	1.18	0.73	67.0	6.57	0.68
PTFF-130SM-14230	2.0~8.0	3.0	3600	0.035	2900	0.12	6.0	0.59	0.18	36.0	3.53	0.53
		5.0	6000	0.045	4900	0.20	11.0	1.08	0.55	60.0	5.88	0.90



UNIT: mm

