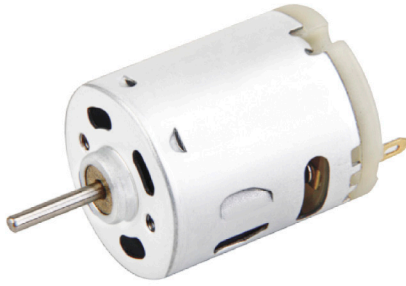


# PTRS-360SA

CARBON BRUSHED DC MICRO MOTOR



28D x 33mmL (1.10D x 1.30inL)

VOLTAGE	4.0~25.0V
HOUSING LENGTH	32.6mm (1.28in)
DIAMETER	27.7mm (1.09in)
SHAFT LENGTH	51mm (2.0in)
SPEED (NO LOAD)	6700~15300 RPM
POWER (AT MAX EFF)	2.71~11.28W
TORQUE (AT MAX EFF)	47.7~80.69g·cm (4.70~7.90 mN·m)
OPERATING TEMPERATURE	-30°C ~+70°C
WEIGHT	51g (1.8oz)

MODEL NUMBER	VOLTAGE (V)		NO LOAD		AT MAXIMUM EFFICIENCY					STARTING		
	OPERATING RANGE	NOMINAL	SPEED RPM	CURRENT A	SPEED RPM	CURRENT A	TORQUE g·cm	TORQUE mN·m	OUTPUT W	TORQUE g·cm	TORQUE mN·m	CURRENT A
PTRS-360SA-3555	4.0~8.0	6.0	15300	0.47	13000	2.65	80.69	7.90	11.28	537.99	52.7	15.04
PTRS-360SA-10500	12.0~25.0	24.0	6700	0.051	5300	0.20	47.70	4.70	2.71	231.70	22.7	0.76

