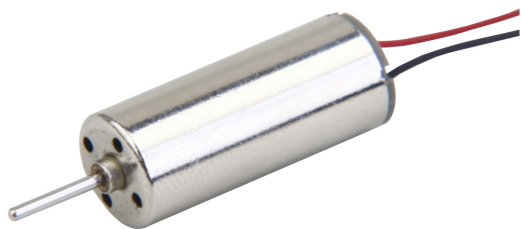


PT0716-111-Q/PT0720-111-Q PT0820-111-Q

CORELESS DC MICRO MOTOR

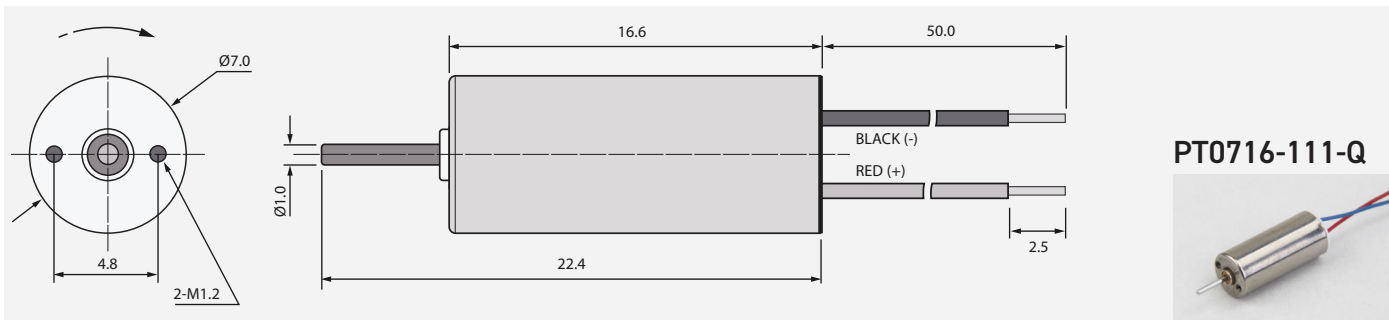


7D x 16mmL (0.28D x 0.63inL)
7D x 20mmL (0.28D x 0.79inL)
8D x 20mmL (0.31D x 0.79inL)

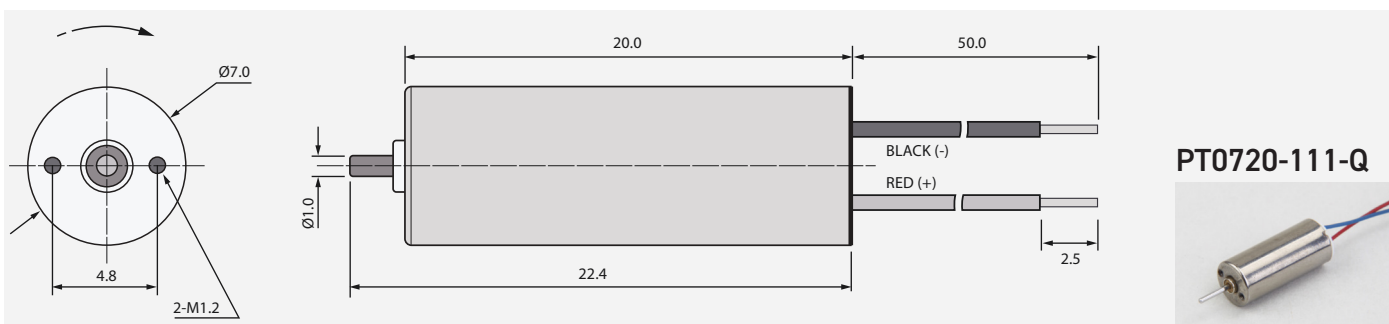
VOLTAGE	2.4~3.7V
HOUSING LENGTH	16.6~20.0mm (0.65~0.79in)
DIAMETER	7.0~8.0mm (0.28~0.31in)
SHAFT LENGTH	22.4~25.0mm (0.88~0.98in)
SPEED (NO LOAD)	20000~51000 RPM
CURRENT (NO LOAD)	30~280mA
OPERATING TEMPERATURE	-20°C ~+60°C

MODEL NUMBER	RATED VOLTAGE		NO LOAD		RATED	
	NOMINAL		SPEED	CURRENT	SPEED	CURRENT
	V		RPM	mA	RPM	mA
PT0716-111-Q	3.5		42000	100	26000	700
PT0720-111-Q	3.7		51000	280	33000	2700
PT0820-111-Q	2.4		20000	30	10000	380

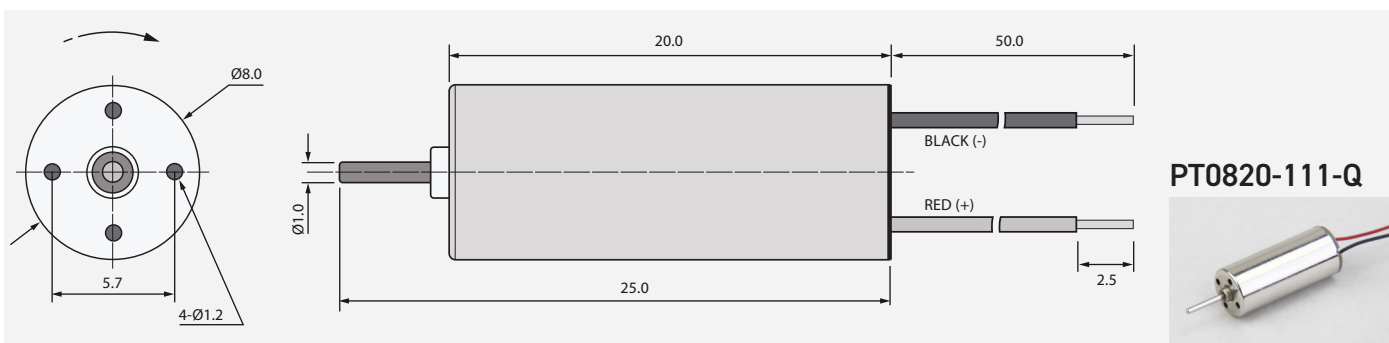
UNIT: mm



PT0716-111-Q



PT0720-111-Q



PT0820-111-Q