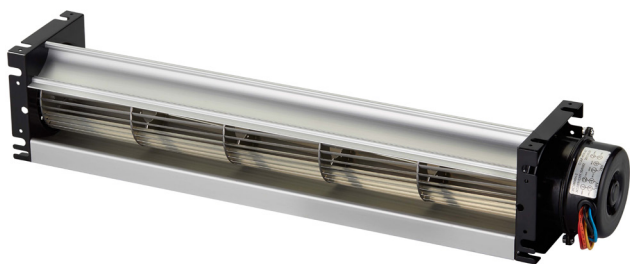


JHC-081A

J SERIES AC CROSSFLOW FAN



VOLTAGE	120V~230V
BEARINGS	Ball Bearings
MOTOR	AC Capacitor Type 1ø 4p
IMPELLER	Aluminum Alloy
LENGTH (C)	Min 20.2in (512mm), Max 31.9in (810mm)
AIRFLOW	184~300 CFM (5.2~8.5m³/min)
OPERATING TEMP	0°C~45°C
OPERATING LIFE	30,000 hours @ 40°C

Model Number	inches (mm)			V	Hz	A	W	RPM	Pressure (P)		Airflow (Q)		dBA	kg
	A	B	C						mmAq	inH ₂ O	m³/min	CFM		
JHC-08142A1223-3B	16.5 (420)	17.3 (440)	20.2 (512)	120	50/60	0.25/0.29	26/31	1300/1450	1.3/1.8	0.05/0.07	5.2/5.8	184/205	44/47	2.30
				230	50/60	0.14/0.16	27/31	1300/1350	1.3/1.8	0.05/0.07	5.2/5.5	205/194	44/46	
JHC-08150A1223-3B	19.7 (500)	20.5 (520)	24.1 (612)	120	50/60	0.25/0.29	27/32	1300/1400	1.4/1.9	0.06/0.07	6.6/7.1	233/251	44/46	2.40
				230	50/60	0.15/0.16	27/32	1250/1300	1.3/1.8	0.05/0.07	6.3/6.6	222/233	43/44	
JHC-08160A1223-3B	23.6 (600)	24.4 (620)	28.0 (710)	120	50/60	0.33/0.37	35/41	1250/1300	1.4/1.8	0.06/0.07	7.4/7.9	261/279	45/46	3.00
				230	50/60	0.18/0.20	35/40	1200/1200	1.3/1.8	0.05/0.07	7.3/7.3	258/258	44/44	
JHC-08170A1223-3B	27.6 (700)	28.3 (720)	31.9 (810)	120	50/60	0.34/0.38	36/42	1250/1250	1.2/1.6	0.05/0.06	8.5/8.5	300/300	45/45	3.20
				230	50/60	0.19/0.21	36/40	1150/1100	1.2/1.5	0.05/0.06	7.9/7.7	279/272	43/42	

