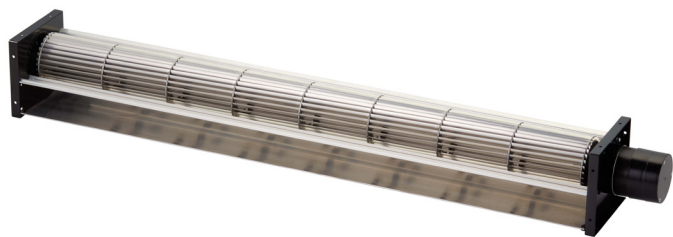


JG3-065A

J SERIES DC CROSSFLOW FAN



VOLTAGE	12V, 24V
BEARINGS	Ball Bearings
MOTOR	DC Brushless Type 3-phase
IMPELLER	Aluminum Alloy
LENGTH (C)	Min 14.7in (373mm), Max 37.8in (961m)
AIRFLOW	187~476 CFM (5.3~13.5 m³/min)
OPERATING TEMP	0°C~45°C
OPERATING LIFE	30,000 hours @ 40°C

Model Number		inches (mm)			V	A	RPM	Pressure (P)		Airflow (Q)		dBA	kg
		A	B	C				mmAq	inH ₂ O	m³/min	CFM		
JG3-06530A12-3B	①	12.4	12.9	14.7	12	1.27	1700	4.4	0.17	5.3	187	49	1.00
JG3-06530A24-3B	①	(315)	(327)	(373)	24	0.60							
JG3-06536A12-3B	②	14.8	15.2	17.0	12	1.44	1600	4.2	0.16	6.2	219	48	1.10
JG3-06536A24-3B	②	(375)	(387)	(433)	24	0.70							
JG3-06542A12-3B	③	17.1	17.6	19.4	12	1.49	1550	4.0	0.16	6.5	230	47	1.20
JG3-06542A24-3B	③	(435)	(447)	(493)	24	0.71							
JG3-06550A24-3B	④	20.5	20.9	23.7	24	1.20	1850	5.3	0.21	9.7	343	54	1.40
JG3-06560A24-3B	⑤	24.4	24.9	27.6	24	1.32	1700	4.9	0.19	11.2	396	50	1.60
JG3-06570A24-3B	⑥	28.3	28.8	31.5	24	1.38	1650	4.8	0.19	12.6	445	50	1.70
JG3-6542X2A24-4B	⑦	34.6	35.1	37.8	24	1.45	1600	4.6	0.18	13.5	476	48	2.00

