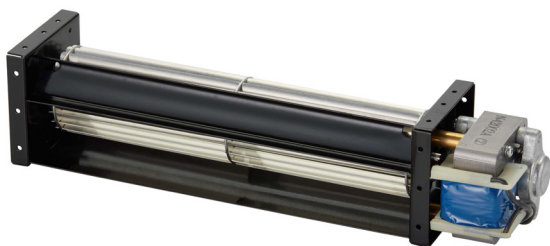


# JE-043A

## J SERIES AC CROSSFLOW FAN



VOLTAGE	120V, 230V
BEARINGS	Ball Bearings
MOTOR	AC Shaded Pole Type 1ø 2p
IMPELLER	Aluminum Alloy
LENGTH (C)	Min 6.3in (160mm), Max 17.1in (435mm)
AIRFLOW	25~117 CFM (0.7~3.3 m³/min)
OPERATING TEMP	0°C~45°C
OPERATING LIFE	30,000 hours @ 40°C

Model Number	inches (mm)			V	Hz	A	W	RPM	Pressure (P)		Airflow (Q)		dBA	g
	A	B	C						mmAq	inH <sub>2</sub> O	m³/min	CFM		
JE-04309A12	3.9	4.3	6.3	120	50/60	0.14/0.12	10/9	2600/3000	1.1/1.6	0.04/0.06	0.7/0.8	25/28	37/40	520
JE-04309A23	(98)	(108)	(160)	230	50/60	0.08/0.07	10/9	2600/3000	1.1/1.6	0.04/0.06	0.7/0.8	25/28	38/41	
JE-04315A12	6.3	6.7	8.7	120	50/60	0.15/0.13	11/10	2300/2200	0.9/1.2	0.03/0.05	1.2/1.2	42/42	37/35	550
JE-04315A23	(160)	(170)	(222)	230	50/60	0.08/0.07	11/10	2300/2200	0.9/1.2	0.03/0.05	1.2/1.2	42/42	38/36	
JE-04319A12	7.8	8.2	10.4	120	50/60	0.22/0.19	15/14	2400/2500	0.9/1.2	0.03/0.05	1.5/1.6	53/56	39/40	650
JE-04319A23	(198)	(208)	(264)	230	50/60	0.09/0.08	13/12	2400/2500	0.9/1.2	0.03/0.05	1.5/1.6	53/56	38/36	
JE-04324A12	9.8	10.2	12.4	120	50/60	0.22/0.20	16/15	2400/2300	0.9/1.0	0.03/0.04	1.9/1.8	67/70	39/38	680
JE-04324A23	(250)	(260)	(315)	230	50/60	0.09/0.08	13/12	2300/2000	0.9/1.0	0.03/0.04	1.8/1.6	63/56	37/34	
JE-04329A12	11.8	12.2	14.8	120	50/60	0.32/0.29	22/21	2600/2900	1.2/1.4	0.05/0.06	2.5/2.7	88/95	44/45	890
JE-04329A23	(300)	(310)	(375)	230	50/60	0.14/0.13	19/18	2500/2500	1.2/1.4	0.05/0.06	2.5/2.5	88/88	43/42	
JE-04335A12	14.2	14.6	17.1	120	50/60	0.34/0.32	23/23	2500/2500	1.2/1.3	0.05/0.05	3.3/3.3	117/117	43/43	920
JE-04335A23	(360)	(370)	(435)	230	50/60	0.15/0.14	20/19	2400/2100	1.2/1.3	0.05/0.05	3.2/2.5	113/88	42/39	

