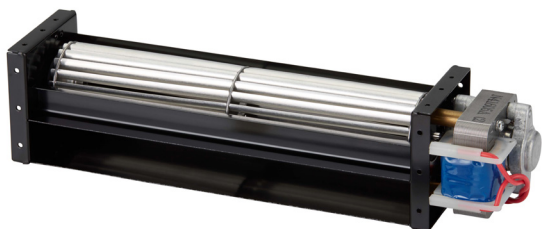


# JE-040A

## J SERIES AC CROSSFLOW FAN



VOLTAGE	120V, 230V
BEARINGS	Ball Bearings
MOTOR	AC Shaded Pole Type 1ø 2p
IMPELLER	Aluminum Alloy
LENGTH (C)	Min 6.3in (160mm), Max 14.4in (366mm)
AIRFLOW	21~74 CFM (0.6~2.1 m³/min)
OPERATING TEMP	0°C~45°C
OPERATING LIFE	30,000 hours @ 40°C

Model Number	inches (mm)			V	Hz	A	W	RPM	Pressure (P)		Airflow (Q)		dBA	g
	A	B	C						mmAq	inH <sub>2</sub> O	m³/min	CFM		
JE-04009A12	3.9	4.3	6.3	120	50/60	0.14/0.12	10/9	2700/3000	1.7/2.3	0.07/0.09	0.6/0.7	21/24	32/35	520
JE-04009A23	(98)	(108)	(160)	230	50/60	0.09/0.07	11/9	2700/3000	1.7/2.3	0.07/0.09	0.6/0.7	21/24	33/36	
JE-04015A12	6.3	6.7	8.7	120	50/60	0.15/0.13	11/10	2600/2800	1.9/2.4	0.07/0.09	1.0/1.1	35/39	34/36	560
JE-04015A23	(160)	(170)	(222)	230	50/60	0.09/0.07	11/9	2600/2800	1.9/2.4	0.07/0.09	1.0/1.1	35/39	34/37	
JE-04019A12	7.8	8.2	10.2	120	50/60	0.15/0.13	10/9	2500/2400	2.0/2.6	0.08/0.10	1.4/1.3	49/46	34/35	600
JE-04019A23	(198)	(208)	(260)	230	50/60	0.09/0.07	12/11	2500/2400	2.0/2.6	0.08/0.10	1.4/1.3	49/46	34/36	
JE-04029A12	11.8	12.2	14.4	120	50/60	0.23/0.21	17/16	2400/2300	2.1/2.6	0.08/0.10	2.1/2.0	74/70	38/38	730
JE-04029A23	(300)	(310)	(366)	230	50/60	0.10/0.09	13/13	2400/2300	2.1/2.6	0.08/0.10	2.1/2.0	74/70	35/34	

